

INVESTMENT SCHEDULE



PREPARED FOR

TOWN OF LYSANDER

December 7, 2021

PREPARED BY

Jim Morgan

jim.morgan@tbs.toshiba.com

TOSHIBA

TOSHIBA

INVESTMENT SCHEDULE

TOWN OF LYSANDER NY

New Toshiba Digital Solution

Model Details

- (1) Toshiba e-STUDIO3015AC TOWN CLERKS OFFICE
 - Included Features: 100-sheet RADF, Copier Stand, Inner Finisher
- (1) Toshiba e-STUDIO3018A MAIL ROOM
 - Included Features: 100-sheet RADF, Copier Stand, Inner Finisher, Analog Fax Unit

Service Details

Pool Name	Monthly Pages Included	Monthly Overage Per Page
Mono Pool	7,000	\$0.00600
Color Pool	1,000	\$0.05500

CURRENT MONTHLY LEASE PAYMENT IS \$267.00

Total Monthly Investment

- 63 Month Lease \$265.00

Monthly investment includes parts, labor, travel, and supplies; everything except for paper, staples, and applicable taxes.

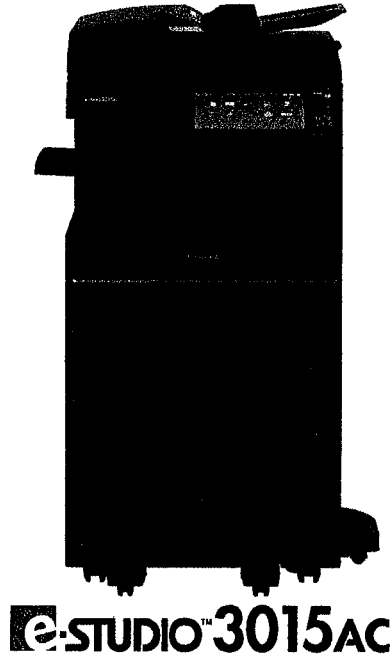
TOSHIBA

TOSHIBA TECHNOLOGY NEVER LOOKED BETTER

The Toshiba e-STUDIO3015AC can increase the efficiency of your workgroups, improve the professionalism of your presentations, and streamline the workflow of your organization. And, that's just for starters.

A 300-sheet high-speed, high-capacity Dual-Scan Document Feeder (DSDF) produces up to 120 IPM simplex and 240 IPM duplex. A conventional RADF is available for less scan-intensive businesses.

Toshiba has developed a customizable MFP to make your job easier. A new 10.1" tablet-style touch screen works intuitively, helping you find instructions, functions, and commands with the swipe of the finger. Toshiba's internally developed Multi-Station Print Enabler allows users to send print jobs from their desktop and retrieve them at any convenient MFP by simply swiping their badge and authenticating at that device.



FEATURES AT A GLANCE

- Copy/Print Speed: 30 PPM
- Print Resolution: 1,200 x 1,200 dpi
- First Copy Out: 5.9s B&W, 7.8s Color
- Paper Capacity: Standard 1,200 Sheets / Max 3,200 Sheets
- Scan Speed: DSDF Scan—240 IPM Duplex, 120 IPM Simplex; RADF Scan—73 IPM
- Memory: 4GB
- Reproduction Ratio: 25% to 400%
- Max Duty Cycle: 180K B&W / 90K Color Mo
- 10.1" Color WVGA Touch Screen Tilting Display

POPULAR OPTIONS

100-Sheet RADF or 300-Sheet DSDF
550-Sheet Paper Feed Pedestal
550-Paper Drawer
2,000-Sheet LCF
Console Finisher
Saddle-Stitch Finisher
Job Separator
Hole Punch Unit

TOSHIBA

A COMPACT DESIGN THAT LEAVES NOTHING OUT

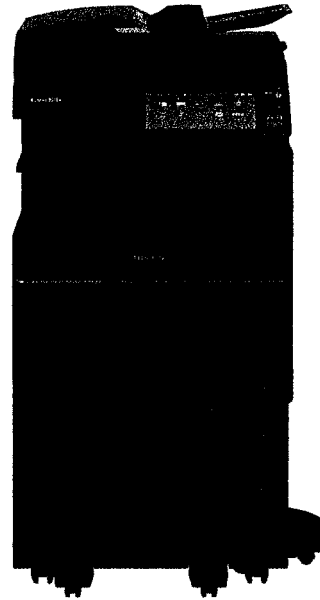
Small to medium workgroups need to get a lot more done often using fewer resources and minimal space. That's the thinking behind the e-STUDIO3018A. Plenty of functions, lots of capacity, and a small footprint with a fresh, new look.

The e-STUDIO3018A includes all the features you would expect from a top quality MFP. A new tiltable, touch swipe 10.1" color panel works like a tablet so you can find whatever you need by just swiping your finger. A 300-sheet high-speed, high-capacity Dual-Scan Document Feeder (DSDF) produces up to 120 IPM simplex and 240 IPM duplex. A conventional RADF is available for less scan-intensive businesses.

Multi-Station Print Enabler allows users to send print jobs from their desktop and retrieve them at any convenient MFP by simply swiping their badge and authenticating at that device.

FEATURES AT A GLANCE

- Copy/Print Speed: 30 PPM
- Print Resolution: 1,200 x 1,200 dpi
- First Copy Out: 4.3s
- Paper Capacity: Standard 1,200 Sheets / Max 3,200 Sheets
- Scan Speed: DSDF Scan—240 IPM Duplex, 120 IPM Simplex; RADF Scan—73 IPM
- Memory: 4GB
- Reproduction Ratio: 25% to 400%
- Max Duty Cycle: 120K Month
- 10.1" Color WVGA Touch Screen Tilting Display



e-STUDIO™3018A

POPULAR OPTIONS

100-Sheet RADF or 300-Sheet DSDF
550-Sheet Paper Feed Pedestal
550-Paper Drawer
2,000-Sheet LCF
Console Finisher
Saddle-Stitch Finisher
Job Separator
Hole Punch Unit

TOSHIBA

OUR QUALITY COMMITMENT



The Toshiba Quality Commitment is our guarantee that you're getting the utmost in advanced technology, dependability, service and support. Toshiba stands squarely behind our promise with the assurance of complete satisfaction. Everything we do contributes to that goal—from setting the industry standard for research and development, to providing instant access to Toshiba support personnel. Look around. Nothing compares to Toshiba...quality guaranteed.

NO FINE PRINT. NO STRINGS ATTACHED. HERE'S HOW THE GUARANTEE WORKS.

FREE REPLACEMENT

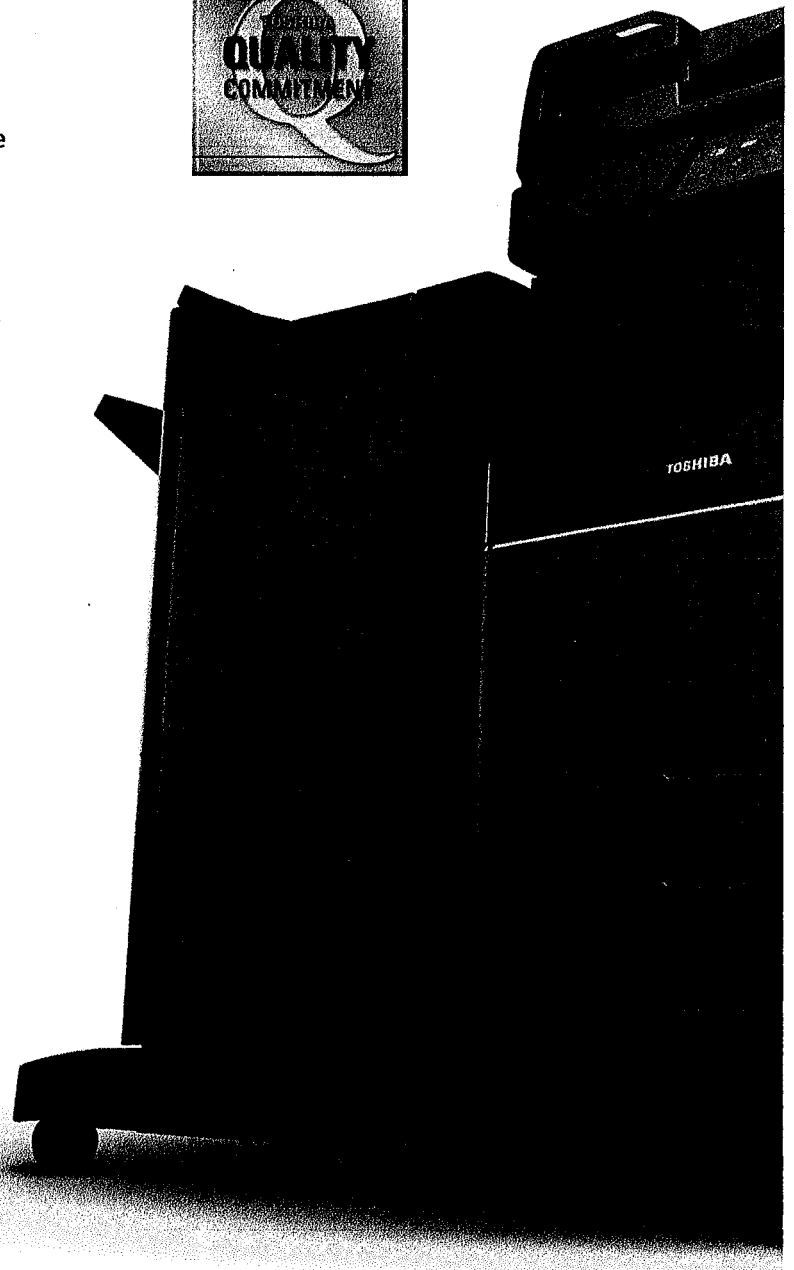
If your Toshiba manufactured copier, facsimile, printer, thermal barcode printer or its accessories do not operate within Toshiba's product specifications during the term of this program, and if the equipment cannot be repaired to perform within product specifications, Toshiba will replace the copier, facsimile, printer, thermal barcode printer or accessory at no charge with a model of equal or better features and specifications.

FREE LOANER

If your Toshiba manufactured copier, facsimile, printer or thermal barcode printer is out-of-service more than two (2) consecutive business days after notifying your Authorized Toshiba Servicing Dealer or requires off-site service, a loaner copier, facsimile, printer or thermal barcode printer will be provided by the Authorized Toshiba Servicing Dealer at no additional charge.

TERM OF PROGRAM

The term of this program is: a) for purchased equipment, three years from equipment installation date or maximum number of copies as stated in the product specifications, whichever occurs first; or b) for leased or rental equipment, three years or the length of the original lease starting from the equipment installation date, whichever is longer.



9171 9690 0935 0256 7734 96

TOSHIBA FINANCIAL SERVICES

1310 Madrid St
Marshall, MN 56258
800-828-8246

November 15, 2021

LYSANDER TOWN OF
8220 LOOP RD
BALDWINSVILLE, NY 13027-1321

Contract (s): 500-0485025-000 and 500-0485025-001

Dear Valued Customer,

Toshiba Financial Services appreciates the opportunity to be working with you on the above-referenced contract(s), which is (are) nearing the end of its initial term.

Please refer to the terms and conditions of your contract(s) for important details concerning any end of term notification requirements as well as equipment purchase options and return requirements. If you do not notify us of your decision regarding your end of term options within the timeframe provided in your contract(s), we may continue to invoice you per the terms of the contract.

If you have not already done so, please contact your Toshiba Financial Services account representative today for all of your financing options.

If the contract(s) provide(s) that the equipment may be returned to us, please also be advised that you are solely responsible for removing any data that may reside in the equipment you return, including, but not limited to, hard drives, disk drives or any other form of memory. We are not responsible for any disclosure of your confidential or private information stored on the equipment as a result of your failure to remove such information prior to returning any equipment to us. Please refer to your contract(s), which may contain more specific requirements in this regard.

Please note, you may have other contracts with Toshiba Financial Services which are not referenced above. If this is the case, such contracts have not yet reached the end of the initial term and are not included in or affected by the terms of this letter.

We are pleased to have assisted you with your equipment investment and hope we can be of service to you again in the future.

If you have any questions, please call us at 800-828-8246.

Thank you for your business.

Sincerely,

Asset Management